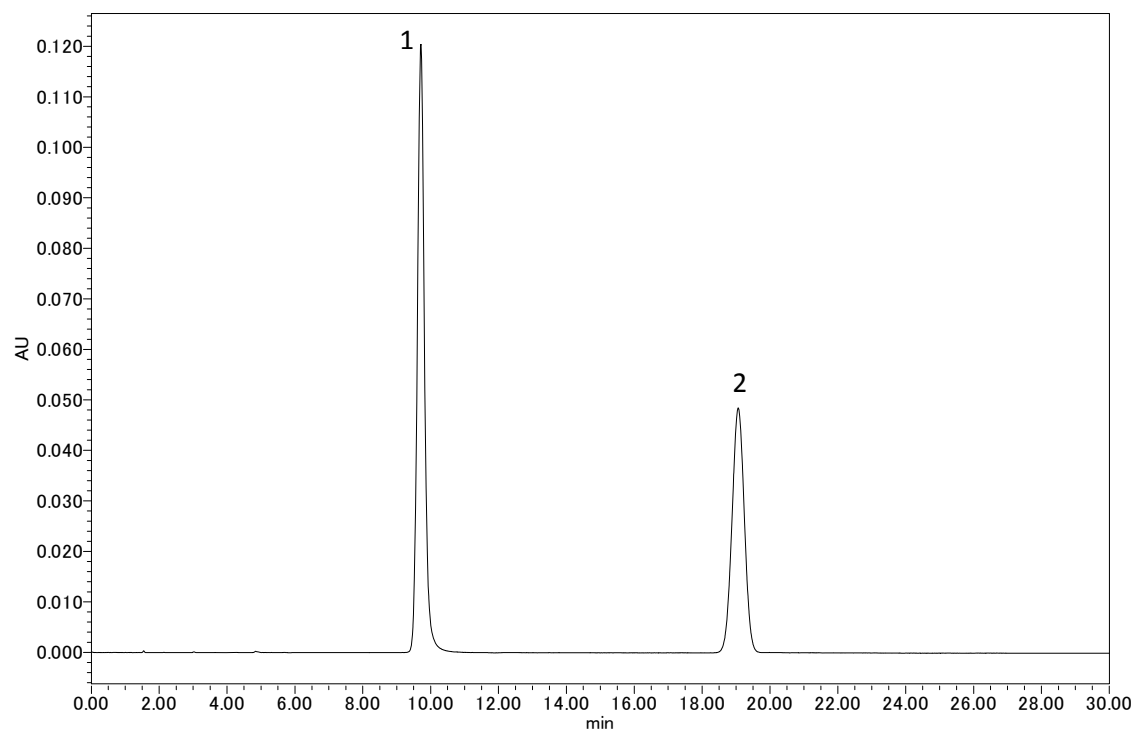


Develosil Application Data

No.093 JP:Metformin Hydrochloride

/日本薬局方 メトホルミン塩酸塩錠 定量法



Conditions:

Column : Develosil HSR AQ C18,5um (4.6x150mm)
Mobile phase : Dissolve 0.8g of sodium lauryl sulfate in 620mL of diluted phosphoric acid (1→2500) and add 380mL of Acetonitrile.
Flow rate : 1.0mL/min
Temperature : 40°C
Detection : UV235nm
Sample : 1. Metformin HCl
 2. p-Hydroxybenzoic acid iso-butyl ester
Injection volume : 5.0uL
System : Waters alliance

※Resolution (1.2)=**18.1** (≥6)

※RSD o the peak area ratio of 1 to 2 (%) (n=6)=**0.29** (≤1.0)

