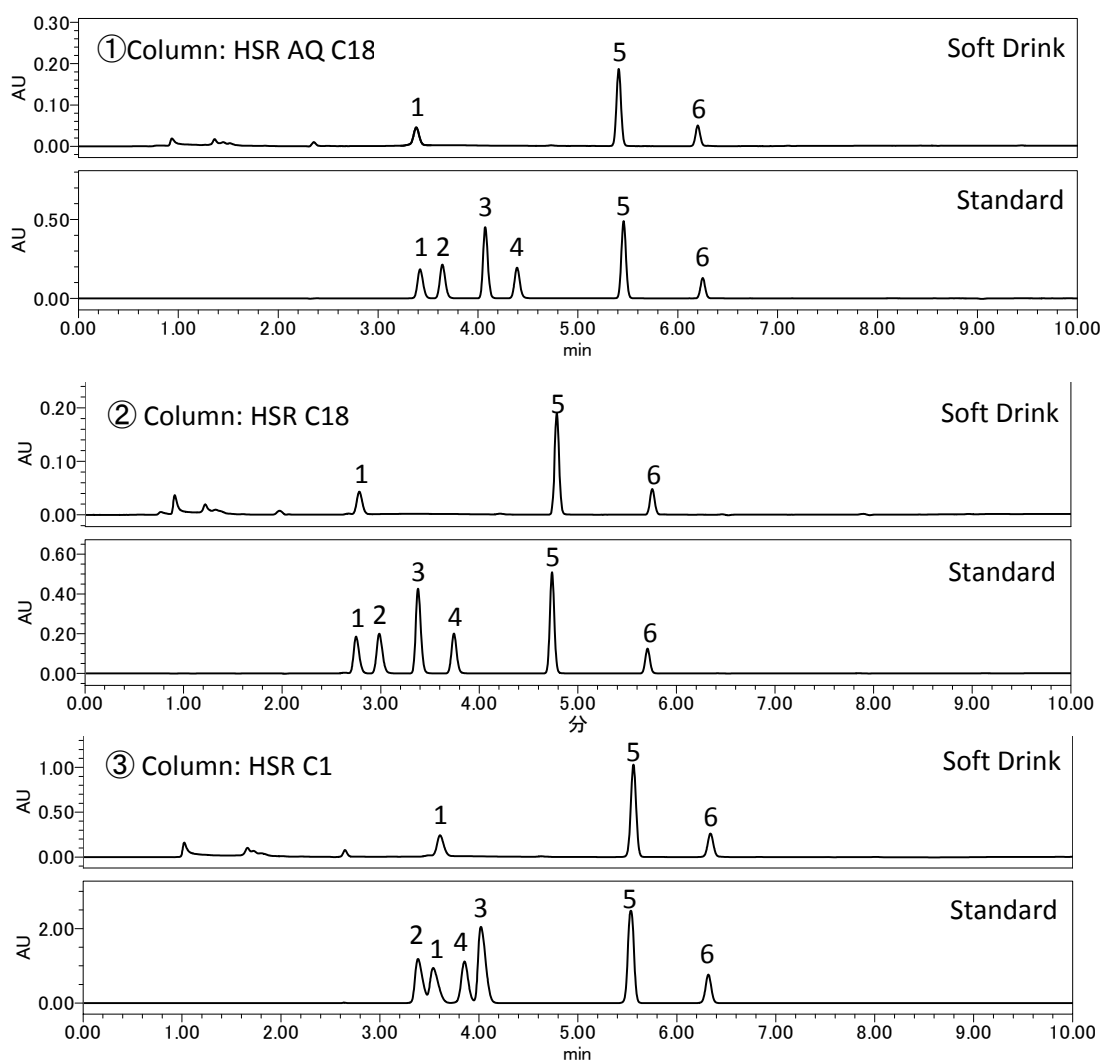


# Develosil Application Data

## No.095 Food additives in a soft drink/飲料中の添加物



### Conditions:

Column : ① Develosil HSR AQ C18, 5 $\mu$ m (4.6x150mm)  
          : ② Develosil HSR C18, 5 $\mu$ m (4.6x150mm)  
          : ③ Develosil HSR C1, 5 $\mu$ m (4.6x150mm)

Mobile phase : A) 10mM (NH<sub>4</sub>)<sub>2</sub>HPO<sub>4</sub> (pH 6.0)  
              : B) Acetonitrile

Gradient : B) 10%-50%(0-10min)

Flow rate : 1.0 mL/min

Temperature : 40 °C

Detection : UV214 nm

Sample : 1. Acesulfame K (0.50mg/mL)  
          : 2. Sodium Benzoate (0.49mg/mL)  
          : 3. Sodium Saccharin Dihydrate (0.54mg/mL)  
          : 4. Potassium Sorbate (0.45mg/mL)  
          : 5. Caffeine (0.46mg/mL)  
          : 6. Aspartame (0.46mg/mL)

Injection volume : 1.0  $\mu$ L

System : Waters alliance