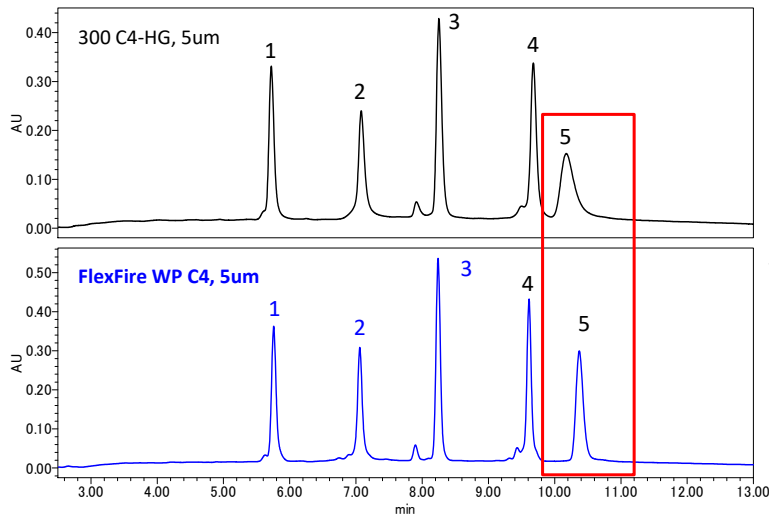


# Develosil® Application Data No.114

## “Analysis of intact proteins”



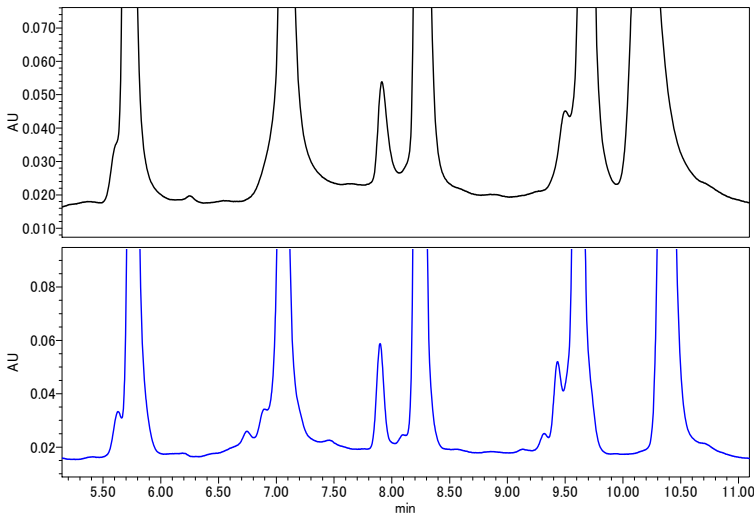
**Conditions:**  
 Column: Develosil 300 C4-HG, 5um (4.6x150mm)  
 FlexFire WP C4, 5um (4.6x150mm)  
 Mobile phase: A) Water+0.1%TFA B) Acetonitrile+0.1%TFA

min	mL/min	%A	%B	Curve
0.00	1.0	80	20	
12.60	1.0	40	60	6
12.63	1.0	80	20	6

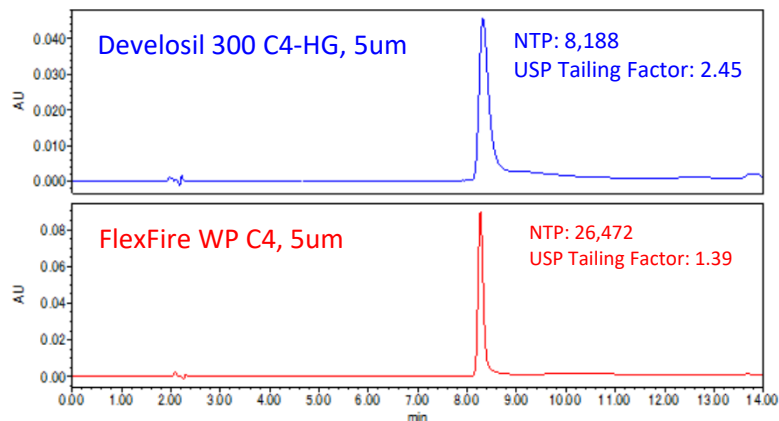
Gradient:

Temperature: 40°C  
 Detection: UV210nm  
 Sample:  
 1. Ribonuclease A (0.2mg/mL)  
 2. Cytochrome C (0.2mg/mL)  
 3. Lysozyme (0.2mg/mL)  
 4. α-Lactalbumin (0.2mg/mL)  
 5. Catalase (0.6mg/mL)

injection volume: 10µL  
 System: Waters alliance e2695



The newly developed FlexFire WP C4 can obtain sharper peaks than conventional products. FlexFire WP C4 maintains good peak shape, especially in the presence of columns that cause peak broadening in the hundreds of thousands of molecular weight regions.



### Analysis of Transferrin

Transferrin was measured under the same analytical conditions as the above protein mixture.

The performance difference is clear even if you look at the obtained performance parameters.